

## One|gt Residences - Unit 722

George Town Central, George Town, Cayman Islands

MLS#: 414253

**CI\$1,579,000**



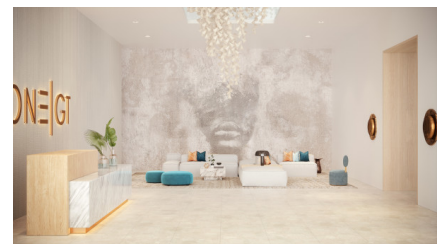
ONE|GT



UNIT TYPE **0.7**

BEDROOMS: 2  
 BATHROOM: 2  
 INTERNAL SQ FT: 1,302  
 EXTERNAL SQ FT: 499  
 TOTAL SQ FT: 1,801

ALL SQUARE FEET ARE APPROXIMATE AND BASED ON THE CURRENTLY AVAILABLE INFORMATION. THE ACTUAL SQUARE FEET MAY VARY FROM THE APPROXIMATE SQUARE FEET SHOWN HEREIN. THE SQUARE FEET DOES NOT INCLUDE COMMON AREAS, BALCONIES, TERRACES, OR OTHER AREAS THAT ARE NOT PART OF THE UNIT'S INTERIOR SPACE.





**Jeremy Hurst**  
jeremy@irg.ky



**Hiva Akhtari**  
hiva@irg.ky

Cayman’s next landmark development project, known as ONE|GT, fuses the very best of contemporary urban living from around the world - from the vibrant rooftop beach clubs of Miami and LA, to the local piazzas and street cafés of Europe, and of course exquisite Caribbean artistic flair. Comprising a 178-suite boutique hotel and luxury residences, with amazing on-site amenities, ONE|GT is located at the edge of central George Town, on Goring Avenue, directly behind Bayshore Mall. With amazing on-site amenities, ONE|GT will be the capital’s first ten-storey structure, rising to 144’ above ground level and offering spectacular multi-aspect views. Its eleventh floor “Sky Club” with its unique infinity edge pool, private cabanas, bar & grille, yoga, treatment, and event areas, will bring a new level of sophisticated enjoyment to our islands, whilst its “signature” restaurant, grand café, and many other amenities will ensure owners, tenants and guests can enjoy ONE|GT to the fullest. There will also be a private residents’ pool, full gym, and separate residents’ entrance, along with onsite covered and valet parking and owner storage units available. Owners will also enjoy very solid returns on investment from ONE|GT's rental programs or can choose to rent their units on the open market. Estimated completion date is early 2025. Enjoy truly “elevated modern island living” at ONE|GT and invest now before prices elevate too! Unit Type D.1 This exquisite corner residence boasts two en-suite bedroom suites, one a master suite with a dual walk-in closets and direct access to the expansive wrap-around terrace. The unit has a full kitchen, with center aisle and a large living/dining area, providing great indoor/outside living opportunities. Enjoy truly “elevated modern island living” at ONE|GT and invest now before prices elevate too!

## Essential Information

Type	Status	MLS	Listing Type
<b>Residential (For Sale)</b>	<b>Current</b>	<b>414253</b>	<b>Condos</b>

## Key Details

Bed	Bath	Block & Parcel	Year Built
<b>2</b>	<b>2</b>	<b>14BH,167UNIT722</b>	<b>2022</b>

## Additional Fields

Views	Foundation	Stories/Condo	Floor Level
<b>Water View, Inland</b>	<b>Slab</b>	<b>1</b>	<b>7</b>
Occupant	Construction	Class	Land Certificate
<b>None</b>	<b>Concrete</b>	<b>Under Construction</b>	<b>Not Issued</b>

Possession  
**At Completion**

Air Conditioning  
**Central**

How Shown  
**By Appointment/List**

## Property Features

City water  
**Yes**

Fence  
**Yes**

Pool  
**Yes**

Washer/Dryer  
**Yes**

Kitchen  
**Yes**

Family Room  
**Yes**

Dining Area  
**Yes**

Breakfast  
**Yes**

Living Room  
**Yes**

Refrigerator  
**Yes**

Dishwasher  
**Yes**

Disposal  
**Yes**

Microwave  
**Yes**