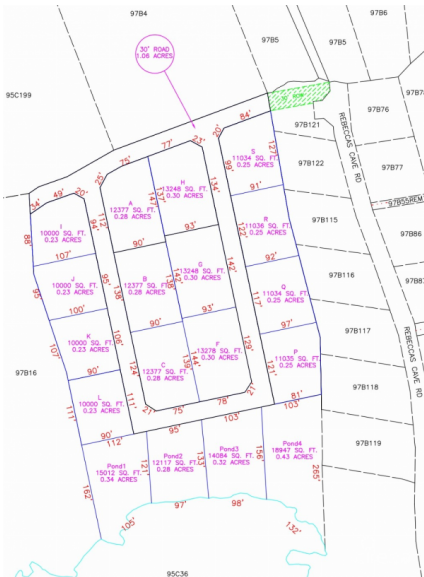


## ALEXANDER GROVE SUBDIVISION - CAYMAN BRAC - LOT R (INLAND)

Cayman Brac West, Cayman Brac, Cayman Islands

MLS#: 415331

**CI\$46,793**



Welcome to Alexander Grove, Cayman Brac's newest and most exciting proposed subdivision. Designed with pride and care, the developers aim to create a vibrant community where every homeowner feels a sense of belonging. As you enter, you'll be greeted by a grand, hand-crafted double-stone wall, making your arrival as welcoming as the place you'll soon call home. This property is one of only 14 "in-land" parcels, nestled near the island's top attractions. From local, traditional cuisine to fine dining and live music at The Alexander Hotel, you're never far from some of the Brac's finest experiences. Just a short walk away, you'll find the island's only stretch of peaceful beach—perfect for quiet evening strolls, where the gentle sound of waves and the magical glow of bioluminescent waters may accompany you. On your way, stop by a local wine and spirits store for your favorite beverage to complete the experience. For Caymanians and first-time buyers, this is your opportunity to take advantage of the Stamp Duty Waiver Program, a government initiative that helps you get onto the property ladder. With this prime location, your investment is sure to grow in value. For investors seeking the perfect vacation home, Alexander Grove offers the ideal setting to relax and unwind. When you're away, the location is perfect for rentals, offering you both a retreat and a smart investment. Don't miss your chance to be part of this promising new community. Get in touch today to secure your piece of Alexander Grove before it's too late!

## Essential Information

Type	Status	MLS	Listing Type
<b>Land (For Sale)</b>	<b>Current</b>	<b>415331</b>	<b>Residential</b>

## Key Details

Width	Depth	Block & Parcel
<b>122.40</b>	<b>84.70</b>	<b>97B,15LOTR</b>

Acreage  
**0.2300**

## Additional Fields

Lot Size  
**0.23**

Views  
**Inland**

Zoning  
**Low Density  
residential**

Road Frontage  
**122.4**