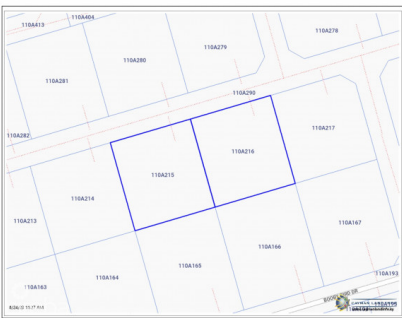


CAYMAN BRAC PARCEL 215 & 216 BUNDLE

Cayman Brac East, Cayman Brac, Cayman Islands

MLS#: 416521

US\$98,000



Envision owning not just one, but two exceptional parcels of land within the prestigious Selworthy Grove Development, cradled amid the captivating vistas of Cayman Brac. This remarkable offering opens the door to crafting not one, but two dream homes. With each plot spanning 0.2450 acres with a combined total of .4923 acres, you're afforded abundant space to fashion residences that mirror your unique lifestyle and preferences. The allure of these properties is elevated by their perch atop the Cayman Brac bluff, rising a commanding 82 feet above the azure sea. This elevated vantage promises expansive, awe-inspiring views of the natural splendor that envelops the area. Imagine waking up to caressing island breezes, greeted by the lush tapestry of the tropics. The Selworthy Grove Development is planning a communal tennis court, poised to enrich the lives of residents with leisurely matches and the chance to partake in physical activities, regardless of whether they're seasoned players or enthusiastic beginners. But these plots hold more than the promise of paradise – they represent an avenue to secure potentially lucrative assets. The Cayman Islands' robust real estate market and reputation for stability and growth have long captivated investors. By becoming stewards of these prime residential lands, you position yourself to capitalize on the flourishing tourism industry and the financial benefits it presents. For a deeper dive into this extraordinary opportunity and to grasp the golden prospects at hand, don't hesitate to contact us. The chance to actualize your visions within the Selworthy Grove Development on Cayman Brac is now doubly present. Seize this moment to invest in a future that's entirely your own, embrace the epitome of opulent living, and immerse yourself in the untamed beauty of the Caribbean paradise that beckons. Call today for a private tour. How do you want to live your life? PICS- Source: www.caymanlandinfo.ky

Essential Information

Type	Status	MLS	Listing Type
Land (For Sale)	Current	416521	Residential

Key Details

Width
200.94

Depth
107.18

Block & Parcel
110A,215,216

Acreage
0.4923

Additional Fields

Lot Size
0.49

Views
Garden View

Road Frontage
200.9