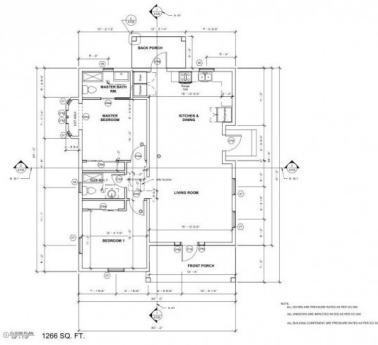


## CAYMAN BRAC CENTRAL FAMILY HOME - COMPLETION EARLY 2025

Cayman Brac Center, Cayman Brac, Cayman Islands

MLS#: 416714

**CI\$349,000**



Welcome to Middle Bluff Ct! Located in the heart of Cayman Brac, this brand new home is the epitome of modernity and comfort. With two spacious bedrooms and two bathrooms, this property offers ample space for you and your loved ones to thrive. As you enter, you'll be greeted by a beautifully designed open floor plan, allowing for seamless flow between the living room, dining area, and kitchen. The kitchen boasts all new appliances, including a gas stove that will surely bring out your inner chef. The sleek porcelain tile flooring adds a touch of elegance throughout the house. Looking to relax or entertain? Step out onto the covered patio, where you can enjoy the fresh island breeze while sipping your morning coffee or hosting gatherings with friends and family. Additionally, there's an option for a standing seam roof that not only enhances the aesthetics but also provides extra durability. Situated on a high and dry lot, this property offers peace of mind during inclement weather. Say goodbye to any worries of flooding! Middle Bluff Ct is currently under construction and is set to be completed by early 2025. This presents a unique opportunity for you to personalize the finishing touches according to your preferences. Don't miss out on this fantastic opportunity to own a brand new home in Cayman Brac Central. Contact me today to schedule a viewing or for more information. Your dream home awaits! Aerial view sourced from [www.caymanlandinfo.ky](http://www.caymanlandinfo.ky)

## Essential Information

Type	Status	MLS	Listing Type
<b>Residential (For Sale)</b>	<b>Current</b>	<b>416714</b>	<b>Homes</b>

## Key Details

Bed	Bath	Block & Parcel	Year Built
<b>2</b>	<b>2</b>	<b>99A,261</b>	<b>2024</b>

Acreage  
**0.2364**

## Additional Fields

Lot Size	Views	Foundation	Zoning
<b>0.24</b>	<b>Garden View</b>	<b>Slab</b>	<b>Low Density residential</b>