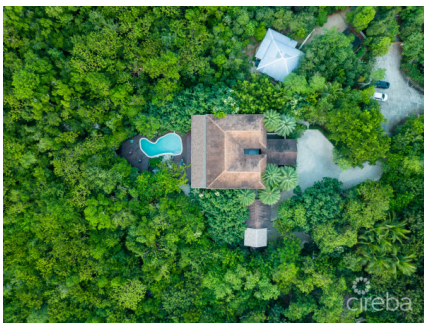


BESPOKE BALI-STYLE JUNGLE RETREAT

North Side

MLS#: 416856

CI\$1,649,000



Welcome to Inna Di Bush! Nestled on over an acre of vibrant tropical jungle in the elevated region of North Side, this one-of-a-kind gem welcomes you with a captivating Balinese-style design. Step into the enchanting indoor/outdoor courtyard adorned with a koi pond and hickatee turtles, creating a tranquil garden space ideal for morning meditations accompanied by the soothing sounds of a trickling water feature. The main floor boasts a spacious chef's kitchen with a breakfast bar, a large dining room, a charming sitting room with an indoor/outdoor shower in the bathroom, and a fully-equipped media room catering to sports and movie enthusiasts. Large track doors throughout the living space open to the courtyard and a stunning back deck. Ascending the modern oversized 'floating' staircase reveals three expansive bedrooms, each with generous closet spaces. The primary bedroom is a private oasis that leads to a fully screened, sizable patio—a perfect spot for reading a book or engaging in a game of table tennis. The back garden serves as an ideal entertaining space with its large deck, outdoor kitchen, spacious deep pool, and ample room for diving, dining, and dancing. Nature trails wind around the property, offering secluded seating areas and an elevated deck with a jacuzzi tub surrounded by lush greenery. Meticulously designed to embrace the year-round warm weather and tropical surroundings, this house seamlessly integrates the outdoors with indoor comforts. Noteworthy is the property's one-bedroom apartment, distinct from the main house. Perfect for a groundskeeper or helpers, it features its own parking and complete detachment, situated on the opposite side of the main house's two-car garage. With numerous unique attributes, experiencing this property in person is the best way to TRULY appreciate its charm!

Essential Information

Type	Status	MLS	Listing Type
Residential (For Sale)	Current	416856	Homes

Key Details

Bed	Bath	Block & Parcel	Year Built
4	4	53A,122	2010

Acreage
1.0100

Additional Fields

Lot Size
1.01

Views
Garden View

Foundation
Slab

Zoning
Agriculture/Residential

Garage
2

Property Features

Pool
Yes

Den
Yes

Furnished
Yes