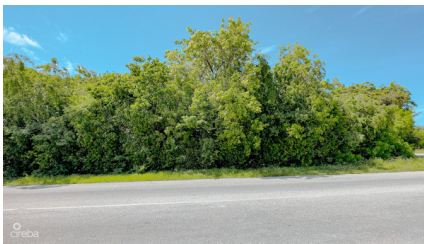
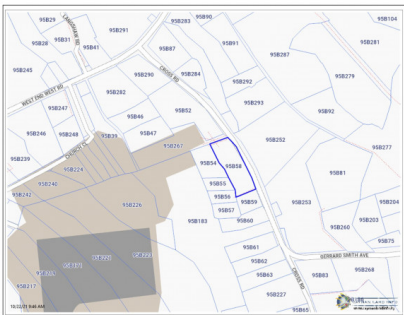


CAYMAN BRAC INLAND 0.7 OF AN ACRE CROSS ROAD NEAR TIBBETTS SQUARE

Cayman Brac West, Cayman Brac, Cayman Islands

MLS#: 413689

US\$295,000



Prime Development Land Near Airport and Tibbetts Square Located in the thriving area of Cayman Brac West, this 0.7-acre parcel of commercial land offers a unique opportunity for developers and business investors. Perfectly positioned within walking distance of Cayman Brac Airport and the Tibbetts Square complex, this property holds immense potential for a wide range of commercial ventures. Exceptional Location for Business Success This prime commercial plot offers the ideal foundation for a variety of businesses seeking visibility and convenience. Whether you're planning to build retail spaces, a hospitality venue, or professional offices, this location provides the traffic and accessibility needed for success. With the airport just steps away, this land is especially suited for businesses catering to travelers, locals, and the growing tourism sector. Unmatched Commercial Potential Cayman Brac is known for its rich natural beauty and laid-back island atmosphere, but the demand for commercial developments is steadily rising. This 0.7-acre lot provides a rare opportunity to establish a highly visible business in a central location. The proximity to Tibbetts Square, the island's commercial hub, means that this plot benefits from being near the island's key businesses, shopping, and dining destinations. For entrepreneurs and developers looking to expand their presence in the Cayman Islands, this property represents an investment that is perfectly suited for commercial use in one of the region's most unique and accessible areas. Cayman Brac - A Growing Business Hub As the second-largest of the Cayman Islands, Cayman Brac is experiencing steady growth in both tourism and commerce. This land offers the flexibility to meet the needs of this evolving market, allowing developers to create businesses that serve both local residents and the influx of tourists who visit the island year-round. Contact today to discover more about this prime commercial opportunity and how it can align with your business goals. How do you want to live your life?

Essential Information

Type
Land (For Sale)

Status
Current

MLS
413689

Listing Type
Residential

Key Details

Width
105.00

Depth
265.00

Block & Parcel
95B,58

Acreage
0.7000

Additional Fields

Lot Size
0.7

Views
Inland

Sea Frontage
1

Road Frontage
265