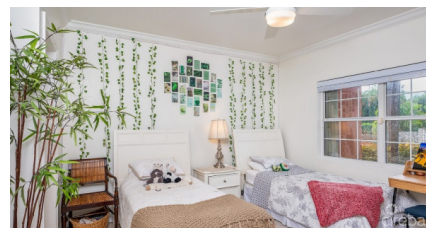


PALM POINT VILLAS UNIT 1 AND 2

South Sound, South Sound, Cayman Islands

MLS#: 417800

CI\$2,195,000



Investors, are you looking for a great investment property with solid rental income in a great location? Don't miss the opportunity to add these two executive townhomes at Palm Point Villas in South Sound to your real estate portfolio.

Conveniently located within walking distance of George Town, Smiths Cove, Grand Old House, Sunset House and multiple Schools, these properties are in a great family friendly, sought after neighborhood. The location provides quick access to both South Church St. & Walkers Road. These executive residences are highly sought after rental properties or you may choose to live in one side and rent the other.

Each townhome spans 2140 sq. ft. with 3 bedrooms, 3.5 bathrooms and a private enclosed yard perfect for outdoor living. Palm Point Villas is surrounded by beautiful landscaped gardens, mature coconut and palm trees that give you a true sense of tranquil island living. Additionally, there is a back-up generator and plenty of storage plus ample parking space.

The ground floor provides open plan living with cathedral ceilings and bay windows that create a truly inviting space to spend time with your family. The large kitchens on each side feature high end cabinetry and an adjacent pantry/laundry room. The home has been tastefully upgraded throughout, including new kitchen countertops, new furniture and new bathroom fixtures. The properties feature three spacious bedrooms, two upstairs, one downstairs, all with ensuite bathrooms and generous closet space. There is an additional half bathroom on the ground floor.

The architectural detail and quality of construction is evident throughout the property, and it is a must see if you are looking to purchase a spacious family home in a prime location

Essential Information

Type	Status	MLS	Listing Type
Residential (For Sale)	Current	417800	Homes

Key Details

Bed
6

Bath
7

Block & Parcel
7C,36H1H2H3H4

Year Built
2006

Acreage
0.2539

Additional Fields

Lot Size
0.25

Views
Garden View

Foundation
Slab

Zoning
**Low Density
residential**

Property Features

Furnished
Yes