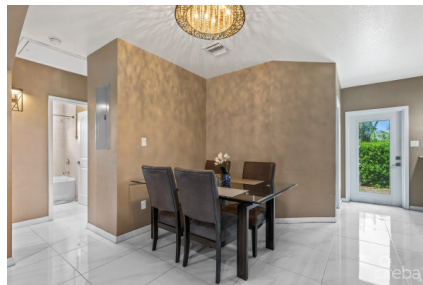


THE HAVEN - 3BED / 3BATH SINGLE FAMILY HOME

Lower valley, Savannah & Bodden Town, Cayman Islands

MLS#: 417854

CI\$530,000



This beautiful single-family home is nestled in The Haven subdivision, a serene and family-friendly community off Shamrock Road. The Haven is known for its peaceful ambiance, well-maintained properties, and a sense of community that makes it an ideal place for families. Its convenient location provides easy access to schools and shopping centres making daily commutes hassle-free. Spanning 1,350 sqft, this home boasts a well-designed layout that ensures a comfortable and functional living space. The 3 spacious bedrooms are perfect for a growing family or for those who need extra space for guests or a home office. The master bedroom includes an en-suite bathroom, offering privacy and a touch of luxury with modern fixtures and fittings. The additional 2 bathrooms ensure that morning routines and busy times of the day are smooth and convenient for all residents. Each bathroom is thoughtfully designed with quality materials and fixtures, providing a comfortable and stylish space. One of the most remarkable aspects of this property is its massive yard. The expansive outdoor space is a blank canvas for your landscaping dreams. Whether you envision a lush garden, a playground for children, or a sophisticated outdoor entertainment area, this yard can accommodate it all. There's plenty of room for a patio or deck, where you can set up outdoor furniture and a grill, perfect for summer barbecues and gatherings with friends and family. Overall, this home in The Haven subdivision combines the best of indoor and outdoor living, making it a desirable option for anyone looking to settle in a welcoming and spacious environment. Contact me today to view this serene property.

Essential Information

Type	Status	MLS	Listing Type
Residential (For Sale)	Pen/Con	417854	Homes

Key Details

Bed	Bath	Block & Parcel	Year Built
3	3	32B,497	2019

Acreage
0.2500

Additional Fields

Lot Size
0.25

Views
Garden View

Foundation
Slab

Zoning
**Low Density
residential**

Property Features

Furnished
Yes