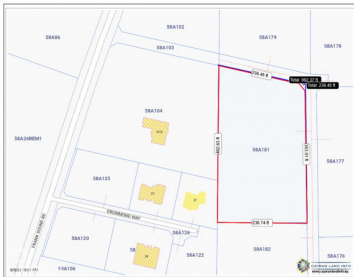


## 2 ACRES OFF FRANK SOUND ROAD

Midland East

MLS#: 418201

**CI\$470,000**



Ideal site for whatever you're thinking: subdivide it for house lots, build apartments, detached home, cottages OR keep this one for yourself and create the perfect place for your life! Plenty of room for a fabulous home, outdoor entertaining area, parking for cars and boats...room to roam and off the main Frank Sound Road for privacy and peace. Sitting at 4ft above sea level. Width of lot varies from 407 ft to 355 ft on each boundary. Call us and let's talk about options and making this one yours!

### Essential Information

Type <b>Land (For Sale)</b>	Status <b>Current</b>	MLS <b>418201</b>	Listing Type <b>Residential</b>
--------------------------------	--------------------------	----------------------	------------------------------------

### Key Details

Width <b>236.00</b>	Depth <b>375.00</b>	Block & Parcel <b>58A,181</b>
Acreage <b>2.0000</b>		

### Additional Fields

Lot Size <b>2</b>	Views <b>Garden View</b>	Zoning <b>Agriculture/Residential</b>	Road Frontage <b>236</b>
Soil <b>Other</b>			