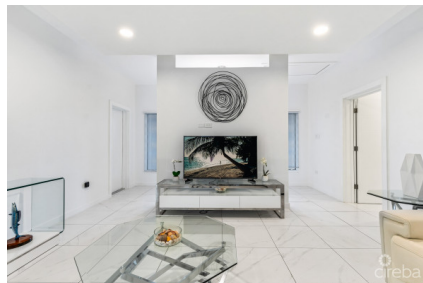


IMMACULATE 3BR FAMILY HOME W/ ADJACENT CANAL LOT

Savannah, Savannah & Bodden Town, Cayman Islands

MLS#: 419013

CI\$1,595,000



Welcome to this stunning 3-bedroom, fully renovated family home situated on 0.28-acres the serene North Sound Estates. Offering a generous 4,000 square feet of living space, this property seamlessly blends modern elegance with the tranquility of waterfront living. This home is complemented by a 0.26-acre canal parcel next to it, beautifully filled and adorned with mature fruit trees. Step outside to enjoy the refreshing swimming pool, or unwind on one of the two outdoor patios — one of which is screened, perfect for enjoying the surroundings in comfort and privacy. Inside, the spacious layout boasts modern finishes and an insulated attic that offers versatile potential — whether as a playroom for the kids, a quiet home office, or an additional lounge space. The home also includes a garage and 250ft water frontage with a 40ft concrete boat dock providing easy access to the canal which leads directly to the North Sound. Located in the highly sought-after North Sound Estates, this home is surrounded by luxury communities, placing you moments away from supermarkets, coffee shops, restaurants, and all the conveniences of daily life. Don't miss the opportunity to make this your family's dream home!

Essential Information

Type Residential (For Sale)	Status New	MLS 419013	Listing Type Homes
---------------------------------------	----------------------	----------------------	------------------------------

Key Details

Bed 3	Bath 3	Block & Parcel 27C,456/457	Year Built 1998
-----------------	------------------	--------------------------------------	---------------------------

Acreage
0.5500

Additional Fields

Lot Size 0.55	Views Canal Front	Foundation Slab	Zoning Low Density residential
-------------------------	-----------------------------	---------------------------	--

Sea Frontage
250

Property Features

Pool Yes	Garage Yes	Den Yes	Furnished Yes
--------------------	----------------------	-------------------	-------------------------