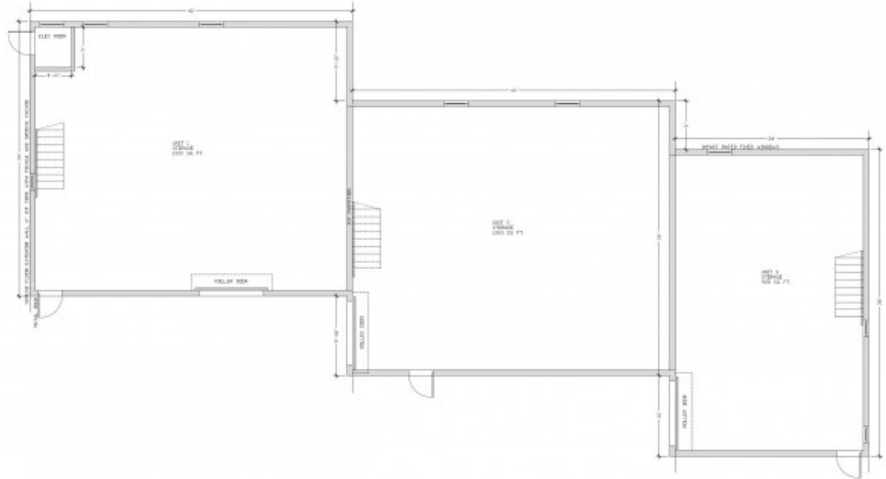
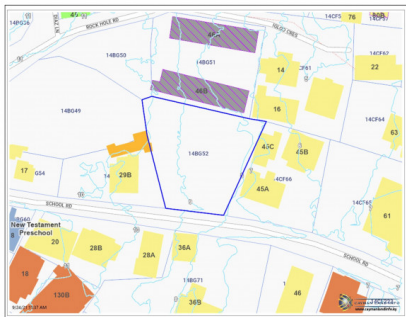


## Modern Warehouse (pre-construction)

George Town Central, George Town, Cayman Islands

MLS#: 413559

**CI\$2,600,000**



**Trisha Johnson**  
 trisha@irg.ky



**Andrew Gilbert MRICS**  
 andrew@irg.ky

Pre-Construction 3 Unit warehouse development, located on the north end of School Road in the heart of George Town. The warehouse will contain three units, ranging from 928 square feet up to 1365 square feet. The warehouse will be built to the similar standards as Dade County Florida with a 150 mph hurricane rated structure, at an elevation above Ivan flood level (approx 9 ft above MSL). Each unit will have its own front roller door and single entry door. The property features security cameras, perimeter fencing, and built using fortified concrete. The units are of modern design with market leading insulation in the roof (R-30) and walls (R-22). The floor to ceiling height is 21 feet. Construction due to begin in January 2022.

## Essential Information

Type <b>Commercial (For Sale)</b>	Status <b>Expired</b>	MLS <b>413559</b>	Listing Type <b>Commercial</b>
--------------------------------------	--------------------------	----------------------	-----------------------------------

## Key Details

Block & Parcel <b>14BG,52</b>	Acreage <b>0.2922</b>	Year Built <b>2022</b>
----------------------------------	--------------------------	---------------------------

## Additional Fields

Lot Size <b>0.29</b>	Views <b>Inland</b>	Foundation <b>Slab</b>	Zoning <b>Commercial Neighbourhood</b>
Occupant <b>None</b>	Type of Use <b>Warehouse</b>	Construction <b>Block</b>	Class <b>Pre-Construction</b>
Land Certificate <b>Not Issued</b>	Possession <b>At Completion</b>	Frontage Road <b>City Maintained</b>	Road Frontage <b>66 ft</b>
How Shown <b>Drive by</b>			